

BS-S20B AS

SPEAKER SYSTEM



BS-S20B are small satellite speakers that conform to the design of the commercial space, and can be installed using metal fittings attachments to produce suitable acoustic sounds even in complex spaces

Key features

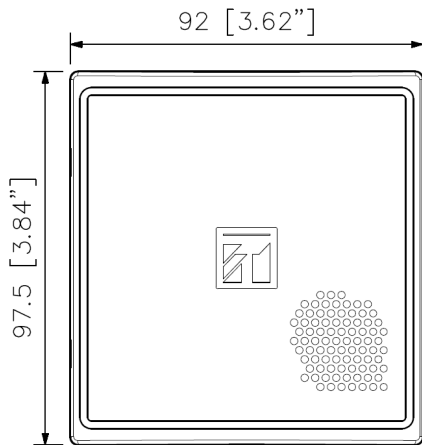
- The wide range of frequency as well as capability of generating high sound pressure level, make it an efficient speaker to be used in a spacious room.
- Speaker's characteristic is full range, very compatible if to be joined with subwoofer as satellite speakers.
- The provided brackets allow the speaker to be mounted on various location with direction radiations according to necessary.
- The mounting brackets come together with the product as accessories.

Specifications

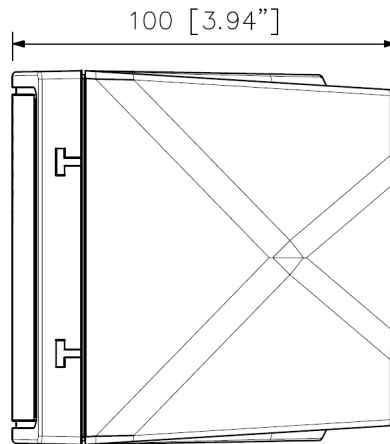
Sensitivity (1W, 1m)	85 dB (Pink Noise 330 - 3,300 Hz)
Frequency Response	150 Hz - 20,000 Hz (-20 dB below SPL)
Speaker Component	8 cm (3") cone-type
Connection	Push-In Terminals (2 connected terminal poles)
Finish	Speaker Cabinet : HIPS Resin (Black) Front Cover: HIPS Resin (Black) Speaker Bracket: Steel plate, Black paint
Dimensions	92 (W) x 97.5 (H) x 100 (D) mm
Weight	600g (without bracket)
Included Accessories	Speaker Bracket x 1, Hexagon Bolts (M5 x 12) (with ring & spring ring) x 2

Dimensions

Satellite Speaker



Front View



Side View

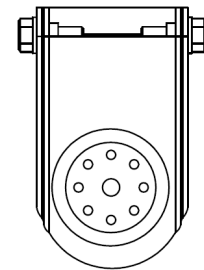
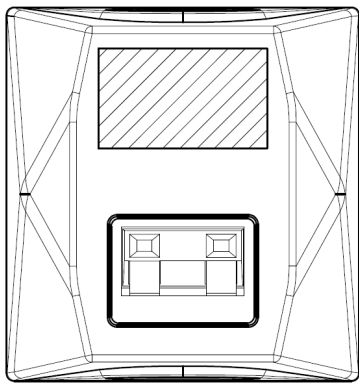
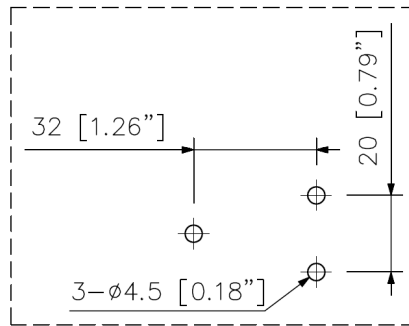


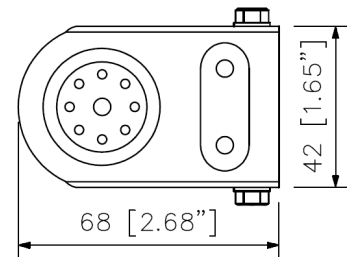
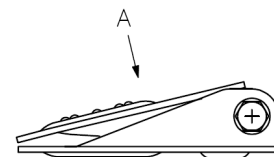
Figure as viewed from point A



Rear View

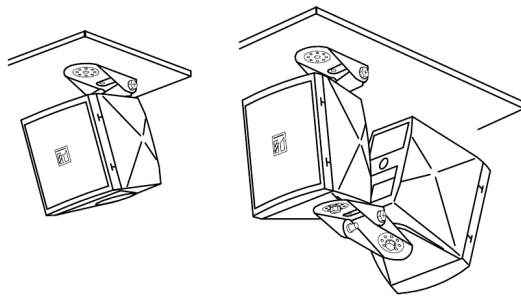


Dimensions of wall or ceiling mount hole

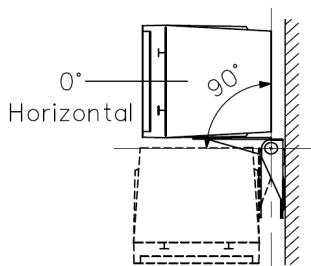


Satellite speaker mounting bracket

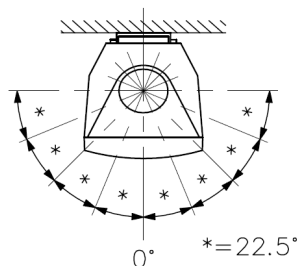
Ceiling mounted View



Wall mounted View



Side View



Top View

