

**SPECIFICATIONS**  
EB-972/982W

MODEL NUMBER	EB-972	EB-982W
<b>Projection Technology</b>	RGB liquid crystal shutter projection system (3LCD)	
<b>Specifications of Main Parts</b>		
LCD	Size	0.55" (C2fine)   0.59" (C2fine)
	Native Resolution	XGA   WXGA
Lightsource	Type	230W UHE
	Life (Normal / Eco)	6,500 / 17,000 hours
Aspect Ratio	4:3   16:10	
Projection Lens	Type	Optical Zoom (Manual) / Focus (Manual)
	F-Number	1.51 - 1.99
	Focal Length	18.20 - 29.20 mm
	Zoom Ratio	1 - 1.6
	Throw Ratio	1.58 - 2.56 (Wide to Tele)   1.38 - 2.24 (Wide to Tele)
<b>Screen Size (Projected Distance)</b>		
Standard	Tele: 27" to 262" [1.40 to 13.81 m]	Tele: 29" to 280" [1.40 to 13.71 m]
	Wide: 27" to 262" [0.85 to 8.52 m]	Wide: 29" to 280" [0.85 to 8.45 m]
<b>Brightness<sup>1</sup></b>		
White Light Output (Normal / Extended)	4,100 lm	4,200 lm
	Colour Light Output	4,100 lm
Contrast Ratio	16,000:1	
<b>Geometric Correction</b>		
Vertical / Horizontal Keystone	±30° / ±30° (Auto Vertical Keystone only)	
Quick Corner	Yes	
Split Screen	Yes	
<b>Internal Speakers</b>		
Internal Speakers	Monoaural: 16W x 1	
<b>Connectivity</b>		
Analog Input	D-Sub 15Pin	2
	Composite	1 (RCA)
Digital Input	DVI-D	NA
	HDMI	2
	HDBaseT	NA
Output Terminal	D-Sub 15Pin	1
	HDMI	NA
Audio Input	2RCA (White & Red)	1
	Stereo Mini	2
Audio Output	Stereo Mini Jack	1
	Others	USB Type A 1 (for Wireless LAN, Firmware Update, Copy OSD Settings) USB Type B 1 (for Firmware Update, Copy OSD Settings)
Mic Input	Stereo Mini	1
	Control I/O	RS-232C 1 Remote Control Input NA
Network	Wired LAN	1
	Wireless	1 (ELPAP11)
<b>Wireless Specification</b>		
Supported Speed For Each Mode	IEEE 802.11b (2.4GHz): 11 Mbps <sup>2</sup> / IEEE 802.11g (2.4GHz): 54 Mbps <sup>2</sup> / IEEE 802.11n (2.4GHz): 72.2 Mbps <sup>2</sup> / IEEE 802.11a (5GHz): 54 Mbps <sup>2</sup> / IEEE 802.11n (5GHz): 150 Mbps <sup>2</sup>	
Wireless LAN Security	Infrastructure: OPEN, WPA2/WPA3-PSK Access Point: OPEN, WPA2-PSK (AES)	
<b>Operating Temperature</b>		
	Low Altitude: 5 - 40 °C <41 - 104 °F> High Altitude: 5 - 35 °C <41 - 95 °F> (20% - 80% Humidity, No Condensation)	
<b>Operating Altitude</b>		
Direct Power On / Off	Yes	
Start-Up Period	Up to 6 seconds, Warm-up Period: 30 seconds	
Cool Down Period	Instant Off	
<b>Air Filter</b>		
Type	High Efficiency Filter	
Maintenance Cycle (Normal / Eco)	10,000 / 20,000 hours <sup>3</sup>	
Power Supply Voltage	100 - 240 V AC ±10%, 50/60 Hz	
<b>Power Consumption (220 - 240V)</b>		
Lamp (Normal / Medium / Eco)	327W / 290W / 225W	
Standby (Network / Energy Saving)	2.0W / 0.3W	
Dimension Excluding Feet (D X W X H)	282 x 309 x 90 mm	
Weight (Including Standard Lens)	Approx. 3.1 kg	
Fan Noise (Normal / Quiet)	37dB / 28dB	

<sup>1</sup> Colour brightness (colour light output) and white brightness (white light output) will vary depending on usage conditions. Colour light output measured in accordance with IDMS 15:4; white light output measured in accordance with ISO 21118.  
<sup>2</sup> Maximum speed and range is achievable when used with same enhanced mode technology. Actual data rates, features and performance may vary depending on your computer system, the environment and other factors.  
<sup>3</sup> When used in the general office environment (the amount of floating dust: 0.04 - 0.2 mg/m<sup>3</sup>). Based on the Epson's in-house test results.



**EB-972/982W**

**Supplied Accessories**  
 Power Cable (1.8m)  
 Connection Cable (1.8m)  
 Remote control with 2AA Battery  
 User's Manual CDROM  
 Quick Start Guide

**Optional Accessories**  
 Spare Lamp: ELPLP97  
 Air Filter: ELPAF54  
 Wireless LAN Card + Cover: ELPAP11  
 Ceiling Mount: ELPMB23  
 Carry Case: ELPKS70



EB-972



EB-982W

©2021 Epson Singapore Pte Ltd. All Rights Reserved. Reproduction in part or in whole, without the written permission from Epson, is strictly prohibited. EPSON and EXCEED YOUR VISION are registered trademarks of Seiko Epson Corporation.

All other product names and other company names used herein are for identification purposes only and are the trademarks or registered trademarks of their respective owners.

Epson disclaims any and all rights in those marks. Projected images shown herein are simulations. The actual product design and contents may vary. Specifications are subject to change without notice and may vary between countries. Please check with local Epson offices for more information.

Apple, iPad and iPhone are trademarks of Apple Inc., registered in the U.S. and other countries. App Store is a service mark of Apple Inc.

Android is a trademark of Google Inc.

Dealer's Stamp

Information correct at time of printing. Printed February 2021

**BUSINESS PROJECTORS**  
EB-E01/X51/W51/FH52/972/982W



Get the most value for your money with Epson business projectors! These projectors are designed to be your choice regardless if they are used in a corporate setting or in the educational field. With your convenience in mind, you can now project your content wirelessly<sup>1</sup> from compatible smart devices without any additional software installation. Now you are able to showcase your content crisp and clear on large screens.

- 12,000 Hours Lamp Life in Eco Mode<sup>2</sup>
- Split Screen
- Auto Vertical Keystone
- Horizontal Keystone Slider<sup>3</sup>
- iProjection
- Cost Effective



**IT'S IN THE DETAILS.**  
 3LCD technology that delivers quality projected images and reliable performance.

Sales Enquiries  
800 120 5564

eponsg  
 EpsnSingapore  
 EpsonSoutheastAsia  
 Epson Singapore

For latest specifications, visit [www.epson.com.sg/projectors](http://www.epson.com.sg/projectors) or call +65 800 120 5564.

**Epson Singapore Pte Ltd** 438B Alexandra Road, Block B Alexandra Technopark, #04-01/04, Singapore 119968. Tel: (65) 6586-5500  
**Epson Customer Care Center** 100G Pasir Panjang Road, #01-09 Interlocal Centre, Singapore 118523. Epson Helpdesk: 800 120 5564. Please refer to [www.epson.com.sg/contact](http://www.epson.com.sg/contact) for opening hours.

<sup>1</sup> For selected models only. <sup>2</sup> Up to 17,000 hours lamp life in Eco Mode for EB-972 & EB-982W. <sup>3</sup> Except EB-E01.



**Full HD 1080p Resolution** EB-FH52 only

Displaying clear and crisp visuals thanks to its Full HD 1080p format, the Epson EB-FH52's high resolution is able to support vivid display on large screen sizes. Improved connectivity ensures smooth communication between your smart devices and the projector, making presentations hassle-free.

Compared to the normal SVGA resolution, Epson EB-FH52's Full HD 1080p resolution is your answer to clearer text and sharper, more detailed images.

**Visuals remain razor-sharp on Full HD 1080p resolution.**

**Full HD 1080p**  
Resolution  
1920 x 1080

**SVGA**  
Resolution  
800 x 600

Sharper Images

Clearer Text

VS

Pixelated Images

Blurry Text

**Content is better shared without distortion and any loss on 1080p resolution.**

SVGA

XGA

WXGA

Full HD

PC Source

**Screen Mirroring with Miracast®**

Miracast support makes it easy to connect smart devices or laptops to a projector. This feature can be used without additional options or the installation of an application for wireless connection. Quick wireless connection makes the presentation smart and eliminates annoying cabling.



Miracast® is a registered trademark of Wi-Fi Alliance®.

**WPA2/WPA3-Enterprise** EB-FH52 only

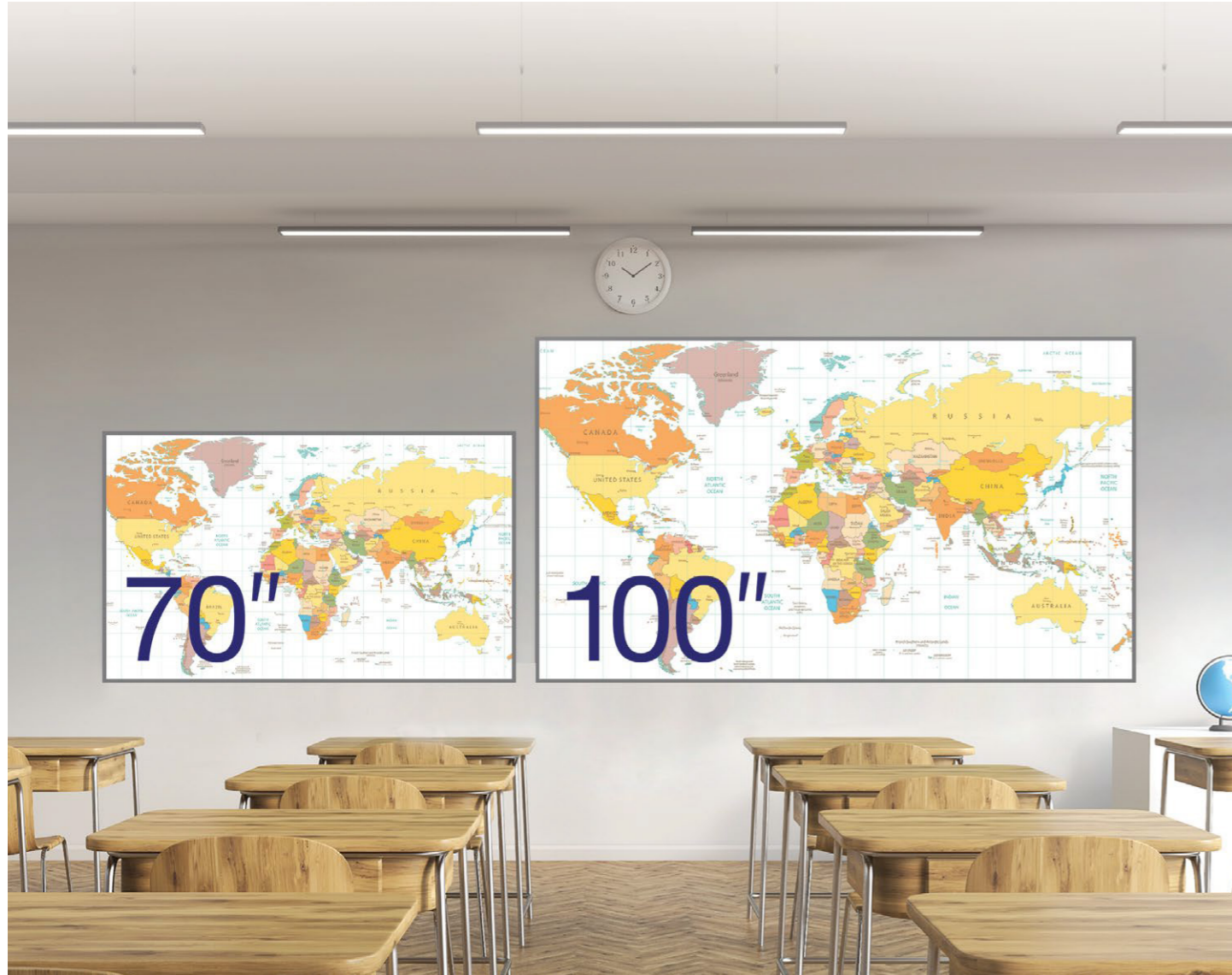
WPA2/WPA3-Enterprise provides a safe method of wireless connectivity so that projectors can connect to a business environment over a secure wireless network.



## Crystal Clear Resolution to aid your Professional Presentations.

With Epson EB-FH52 Full-HD 3LCD projector, rest assured that you will be delivering captivating presentations complete with sharper text and richer images. This high-resolution projector comes with advanced features and better connectivity, making it the ideal partner for both the corporate and education sectors.





How can a projector with better resolution aid your presentation?

Epson Business Projectors	Other SVGA Projectors
<p>Resolution: <b>WXGA</b> 1280 x 800   <b>XGA</b> 1024 x 768</p>	<p>Resolution: <b>SVGA</b> 800 x 600</p>
<ul style="list-style-type: none"> <li>✓ Sharper text and vivid images</li> <li>✓ Includes more information on the screen</li> <li>✓ Better audience engagement</li> </ul>	<ul style="list-style-type: none"> <li>✗ Blurry images with less legible text</li> <li>✗ Less information allowed on the screen</li> <li>✗ Dull and challenging viewing experience</li> </ul>

**Split Screen Function for Wired / Non-wired Devices**

A split screen function enables the simultaneous projection of two images from separate devices through both wired and wireless connections on a single screen, eliminating the need for a second projector. Classroom lessons and business meetings can now be more engaging by connecting the projector with a document camera and a PC or tablet.



**Larger, Sharper, More Impactful Viewing Experience.**

Project at various screen sizes thanks to its flexible screen size ability, these affordable and easy-to-maintain Epson business projectors enable you to give an impactful presentation both in a classroom and a meeting room setting. The razor-sharp and clear visuals allow your audience to enjoy a stress-free viewing even from a distance.



EB-E01

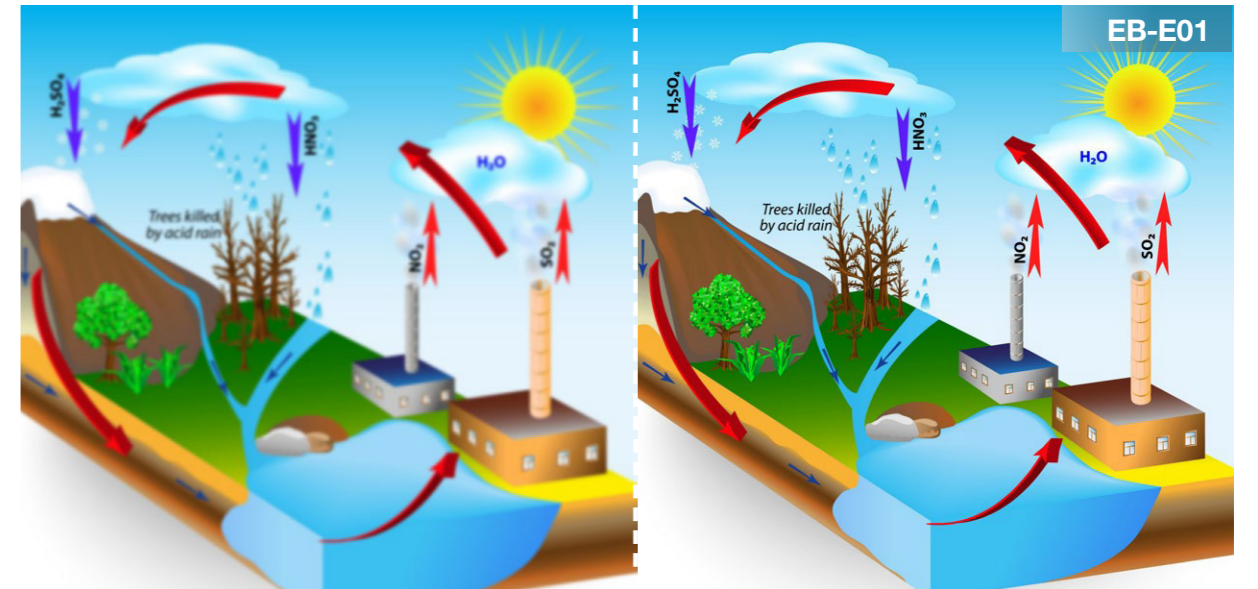


EB-X51/W51



**Compelling Projection**

Bring images to life in the classroom with Epson's XGA resolution projectors. Projecting up to 3,600 lm brightness, you can now present your materials to the class with brighter pictures in better colours and contrasts. Leave a more convincing and stronger presentation to your peers and students with Epson's projectors today.



**XGA Resolution**

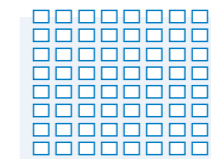


**SVGA Resolution**  
800 x 600



Loss of details

**XGA Resolution**  
1024 x 768



Sharper, detailed images

Enhance the Classroom Experience  
with **Expressive Projections**

Engage the young minds with expressive and vivid projections in class with Epson's XGA projectors. The outstanding flexibility and portability makes it easy for you to install it anywhere in the classroom without additional hassle. Now you can capture and retain students attention to achieve maximum concentration.



EB-E01

**Easy Maintenance and Longer Lamp Life**

A long lamp life reduces maintenance and costs. The lamp will last up to 12,000 hours in ECO mode. Cut down on the frequency of lamp replacements, saving you time and money, and lowering the total cost of ownership.



**Various Interfaces**

Epson business projectors support a wide range of connectivity options including HDMI, VGA, and USB. These interfaces support connections to both the latest digital devices as well as the existing legacy of analogue products without the need for adaptors.



**Lens Shutter**

The lens shutter can be used to quickly stop and start projection without actually turning power off and on.

This feature temporarily blocks an image projected onto a whiteboard, allowing the whiteboard to be used.



**Up to Four Screens at once with iProjection**

Use the Epson iProjection\* app to simultaneously share and control content wirelessly from up to four connected devices.



\* Epson iProjection eliminates the need for annoying cabling by transferring still images and supported files from smart devices to projectors, for smooth wireless projection.



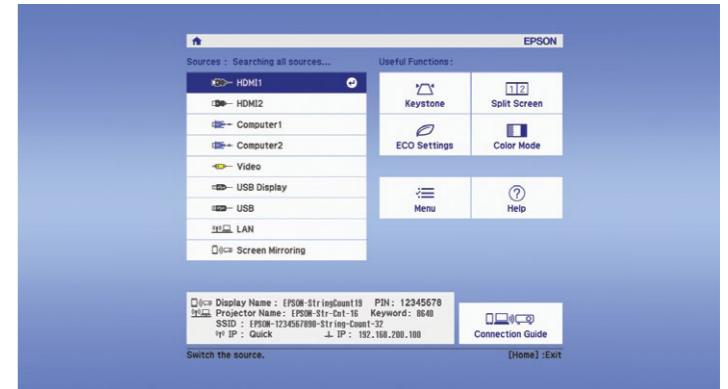
**Easy to Carry**

The projector's compact body makes it easy to carry from one room to another.



**Home Screen**

The home screen offers quick access to frequently used functions. Connected interfaces can be recognised at a glance and switched instantaneously. The information needed when setting up a wireless connection is projected on-screen, making connection fast and easy.



**Auto Power On**

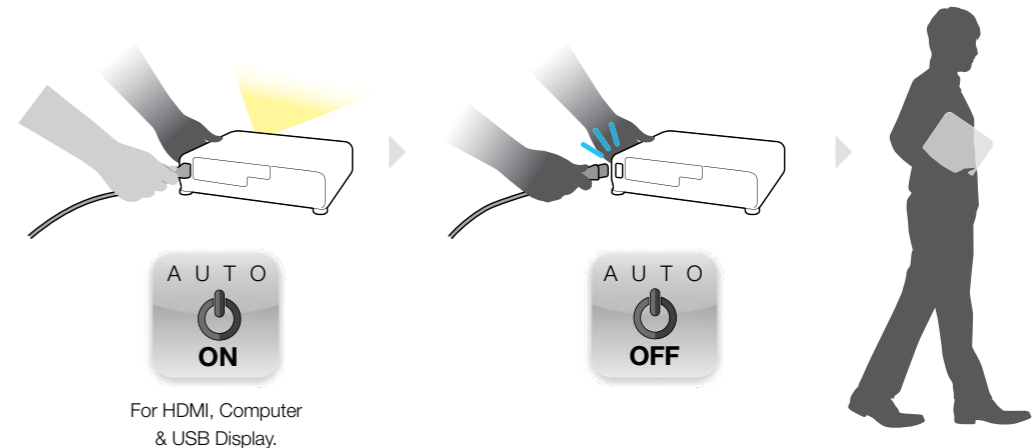
For HDMI, Computer & USB Display

This feature can be used to automatically power up a projector when the projector is connected by cable to a device such as PC, saving setup time.



**Direct Power Off**

Simply unplug the power cable to turn off the projector after use and speed up clean-up after meetings and lessons.



# PROTECT YOUR PROJECTOR. USE GENUINE LAMPS.



Don't compromise on safety – use Epson genuine lamps to avoid damaging your projector. Eliminate the risk of melting parts of your projector, as well as breaks that result in high-voltage shutdown. With a 0% failure rate even after 2,000 hours of usage – compared to 70% in non-genuine lamps – Epson genuine lamps are safer and more reliable. Choose the best possible viewing experience filled with long-lasting sharpness and colour in every projected image with Epson.

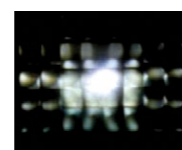
## DANGERS OF NON-GENUINE LAMPS



**UNRELIABLE**  
Counterfeit lamps deteriorate and break much faster than genuine ones.



**UNSAFE**  
Parts of your Epson projector such as the housing or wires may melt, disconnect, or become damaged when using non-genuine lamps.



**POOR IMAGE QUALITY**  
Counterfeit lamps may result in inaccurate colour projection, lower brightness levels, as well as flickering images that spoil your viewing experience.



## GENUINE EPSON LABEL

To ensure the best quality and safety when using your Epson Projector, look for the "Genuine EPSON Colour Shifting Label" on your projector lamp. Real quality and value, only with Epson genuine supplies.

[www.epson.com.sg/projectorlamp](http://www.epson.com.sg/projectorlamp)

# PROJECTOR WISHES COME TRUE.

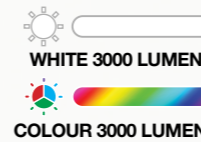
## EPSON 3LCD PROJECTORS

## 1-CHIP PROJECTORS



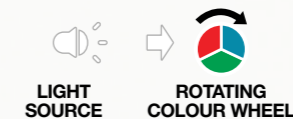
Up to **3x**  
Brighter Colours  
with Epson Projectors

**TRUE BRIGHTNESS**



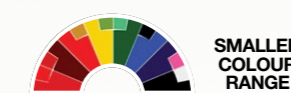
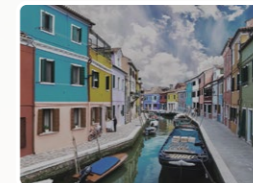
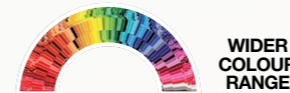
**NO RAINBOW EFFECT**

**TRUE COMFORT**



**EX WIDER COLOUR GAMUT**  
Epson Projectors

**TRUE REALISM**



# TRUE COLOURS

Brighter, vivid projection from Epson.

**9 out of 10** PEOPLE PREFER IMAGES FROM EPSON PROJECTORS



**IT'S IN THE DETAILS.**

With 3LCD panels, every projection gives you spectacular true colours.



Find out more at [www.epson.com.sg/truocolours](http://www.epson.com.sg/truocolours)

\* Leading Epson business and education projectors vs. leading 1-chip DLP projectors, selected according to NPD data as of July 2015. Based on U.S. research conducted by Radius Research.  
\*\*These lumen statistics can be found at [www.colorlightoutput.com](http://www.colorlightoutput.com).

## SPECIFICATIONS EB-E01

MODEL NUMBER		EB-E01
<b>Projection Technology</b>		RGB liquid crystal shutter projection system (3LCD)
<b>Specifications of Main Parts</b>		
LCD	Size	0.55" (C2fine)
	Native Resolution	XGA (1024 x 768)
Lightsource	Type	210W UHE
	Life (Normal / Eco)	6,000 / 12,000 hours
Aspect Ratio		4:3
Projection Lens		
	Type	No Optical Zoom / Focus (Manual)
	F-Number	1.44
	Focal Length	16.70 mm
	Zoom Ratio	1.00 – 1.35 (Digital Zoom)
	Throw Ratio	1.44 - 1.95 (Wide to Tele)
<b>Screen Size (Projected Distance)</b>		
Standard		Tele: 22" to 259" [0.87 to 10.34 m] Wide: 30" to 350" [0.87 to 10.34 m]
<b>Brightness<sup>1</sup></b>		
White Light Output (Normal / Extended)		3,300 lm
Colour Light Output		3,300 lm
<b>Contrast Ratio</b>		15,000:1
<b>Geometric Correction</b>		
Vertical / Horizontal Keystone		±30° / ±30°
<b>Quick Corner</b>		Yes
<b>Split Screen</b>		Yes
<b>Internal Speakers</b>		Monoaural: 2W x 1
<b>Connectivity</b>		
Analog Input	D-Sub 15Pin	1
	Composite	NA
Digital Input	DVI-D	NA
	HDMI	1
	HDBaseT	NA
Output Terminal	D-Sub 15Pin	NA
	HDMI	NA
Audio Input	2RCA	NA
Audio Output	Stereo Mini Jack	NA
Others	USB Type A	NA
	USB Type B	1 (For Firmware Update, Copy OSD Settings)
Control I/O	RS-232C	NA
	Remote Control Input	NA
Network	Wired LAN	NA
	Wireless	NA
<b>Operating Temperature</b>		Low Altitude: 5 – 40 °C <41 – 104 °F> High Altitude: 5 – 35 °C <41 – 95 °F> (20% – 80% Humidity, No Condensation)
<b>Operating Altitude</b>		0 – 3,048 m <0 – 10,000 ft>
<b>Direct Power On / Off</b>		Yes
<b>Start-Up Period</b>		Up to 6 seconds, Warm-up Period: 30 seconds
<b>Cool Down Period</b>		Instant Off
<b>Air Filter</b>		
Type		High Efficiency Filter
Maintenance Cycle (Normal / Eco)		6,000 / 12,000 hours <sup>2</sup>
<b>Power Supply Voltage</b>		100 - 240 V AC ±10%, 50/60 Hz
<b>Power Consumption (220 - 240V)</b>		
Lamp (Normal / Eco)		327W / 225W
Standby (Energy Saving)		0.3 W
<b>Dimension Excluding Feet (D X W X H)</b>		234 x 302 x 77 mm
<b>Weight (Including Standard Lens)</b>		Approx. 2.4 kg
<b>Fan Noise (Normal / Quiet)</b>		37dB / 28dB

<sup>1</sup> Colour brightness (colour light output) and white brightness (white light output) will vary depending on usage conditions. Colour light output measured in accordance with IDMS 15:4; white light output measured in accordance with ISO 21118.

<sup>2</sup> Maximum speed and range is achievable when used with same enhanced mode technology. Actual data rates, features and performance may vary depending on your computer system, the environment and other factors.

<sup>3</sup> When used in the general office environment (the amount of floating dust: 0.04 - 0.2 mg/m<sup>3</sup>). Based on the Epson's in-house test results.

## EPSON EXCEED YOUR VISION

### EB-E01

#### Supplied Accessories

Power Cable (1.8m)  
Remote control with 2AA Battery  
User's Manual CDROM  
Quick Start Guide

#### Optional Accessories

Spare Lamp: ELPLP97  
Air Filter: ELPAF32  
Ceiling Mount: ELPMB23  
Carry Case: ELPKS69



EB-E01

©2021 Epson Singapore Pte Ltd. All Rights Reserved. Reproduction in part or in whole, without the written permission from Epson, is strictly prohibited.

EPSON and EXCEED YOUR VISION are registered trademarks of Seiko Epson Corporation.

All other product names and other company names used herein are for identification purposes only and are the trademarks or registered trademarks of their respective owners.

Epson disclaims any and all rights in those marks. Projected images shown herein are simulations. The actual product design and contents may vary. Specifications are subject to change without notice and may vary between countries. Please check with local Epson offices for more information.

Apple, iPad and iPhone are trademarks of Apple Inc., registered in the U.S. and other countries. App Store is a service mark of Apple Inc.

Android is a trademark of Google Inc.

Dealer's Stamp

Information correct at time of printing.  
Printed February 2021

## SPECIFICATIONS EB-X51

MODEL NUMBER		EB-X51
<b>Projection Technology</b>		RGB liquid crystal shutter projection system (3LCD)
<b>Specifications of Main Parts</b>		
LCD	Size	0.55" (C2fine)
	Native Resolution	XGA (1024 x 768)
Lightsource	Type	210W UHE
	Life (Normal / Eco)	6,000 / 12,000 hours
Aspect Ratio		4:3
Projection Lens		
	Type	Optical Zoom (Manual) / Focus (Manual)
	F-Number	1.49 – 1.72
	Focal Length	16.90 – 20.28 mm
	Zoom Ratio	1 – 1.2 (Digital Zoom)
	Throw Ratio	1.48 – 1.77 (Wide to Tele)
<b>Screen Size (Projected Distance)</b>		
Standard		Tele: 30" to 300" [1.07 to 10.95 m] Wide: 30" to 300" [0.89 to 9.12 m]
<b>Brightness<sup>1</sup></b>		
White Light Output (Normal / Extended)		3,800 lm
Colour Light Output		3,800 lm
<b>Contrast Ratio</b>		16,000:1
<b>Geometric Correction</b>		
Vertical / Horizontal Keystone		±30° / ±30° (Auto Vertical Keystone only)
<b>Quick Corner</b>		Yes
<b>Split Screen</b>		Yes
<b>Internal Speakers</b>		Monoaural: 2W x 1
<b>Connectivity</b>		
Analog Input	D-Sub 15Pin	1
	Composite	1 (RCA)
Digital Input	DVI-D	NA
	HDMI	1
	HDBaseT	NA
Output Terminal	D-Sub 15Pin	NA
	HDMI	NA
Audio Input	2RCA	1
Audio Output	Stereo Mini Jack	NA
Others	USB Type A	1 (For Wireless LAN, Firmware Update, Copy OSD Settings)
	USB Type B	1 (For Firmware Update, Copy OSD Settings)
Control I/O	RS-232C	NA
	Remote Control Input	NA
Network	Wired LAN	NA
	Wireless	Optional (ELPAP11)
<b>Wireless Specification</b>		
Supported Speed For Each Mode		IEEE 802.11b (2.4GHz): 11 Mbps <sup>2</sup> / IEEE 802.11g (2.4GHz): 54 Mbps <sup>2</sup> / IEEE 802.11n (2.4GHz): 72.2 Mbps <sup>2</sup> / IEEE 802.11a (5GHz): 54Mbps <sup>2</sup> / IEEE 802.11n (5GHz): 150 Mbps <sup>2</sup>
Wireless LAN Security		Infrastructure: OPEN, WPA2/WPA3-PSK Access Point: OPEN, WPA2-PSK (AES)
<b>Operating Temperature</b>		Low Altitude: 5 – 40 °C <41 – 104 °F> High Altitude: 5 – 35 °C <41 – 95 °F> (20% – 80% Humidity, No Condensation)
<b>Operating Altitude</b>		0 – 3,048 m <0 – 10,000 ft>
<b>Direct Power On / Off</b>		Yes
<b>Start-Up Period</b>		Up to 6 seconds, Warm-up Period: 30 seconds
<b>Cool Down Period</b>		Instant Off
<b>Air Filter</b>		
Type		High Efficiency Filter
Maintenance Cycle (Normal / Eco)		6,000 / 12,000 hours <sup>2</sup>
<b>Power Supply Voltage</b>		100 - 240 V AC ±10%, 50/60 Hz
<b>Power Consumption (220 - 240V)</b>		
Lamp (Normal / Eco)		327W / 225W
Standby (Network / Energy Saving)		2.0W / 0.3 W
<b>Dimension Excluding Feet (D X W X H)</b>		234 x 302 x 77 mm
<b>Weight (Including Standard Lens)</b>		Approx. 2.5 kg
<b>Fan Noise (Normal / Quiet)</b>		37dB / 28dB

<sup>1</sup> Colour brightness (colour light output) and white brightness (white light output) will vary depending on usage conditions. Colour light output measured in accordance with IDMS 15:4; white light output measured in accordance with ISO 21118.

<sup>2</sup> Maximum speed and range is achievable when used with same enhanced mode technology. Actual data rates, features and performance may vary depending on your computer system, the environment and other factors.

<sup>3</sup> When used in the general office environment (the amount of floating dust: 0.04 - 0.2 mg/m<sup>3</sup>). Based on the Epson's in-house test results.

## EPSON EXCEED YOUR VISION

### EB-X51

#### Supplied Accessories

Power Cable (1.8m)  
HDMI Cable (1.8m)  
Remote control with 2AA Battery  
User's Manual CDROM  
Quick Start Guide

#### Optional Accessories

Spare Lamp: ELPLP97  
Air Filter: ELPAF32  
Wireless LAN Card + Cover: ELPAP11  
Ceiling Mount: ELPMB23  
Carry Case: ELPKS69



EB-X51

©2021 Epson Singapore Pte Ltd. All Rights Reserved. Reproduction in part or in whole, without the written permission from Epson, is strictly prohibited.

EPSON and EXCEED YOUR VISION are registered trademarks of Seiko Epson Corporation.

All other product names and other company names used herein are for identification purposes only and are the trademarks or registered trademarks of their respective owners.

Epson disclaims any and all rights in those marks. Projected images shown herein are simulations. The actual product design and contents may vary. Specifications are subject to change without notice and may vary between countries. Please check with local Epson offices for more information.

Apple, iPad and iPhone are trademarks of Apple Inc., registered in the U.S. and other countries. App Store is a service mark of Apple Inc.

Android is a trademark of Google Inc.

Dealer's Stamp

Information correct at time of printing.  
Printed February 2021

Sales Enquiries  
800 120 5564

epsonsg EpsonSingapore EpsonSoutheastAsia Epson Singapore

For latest specifications, visit [www.epson.com.sg/projectors](http://www.epson.com.sg/projectors) or call +65 800 120 5564.

Epson Singapore Pte Ltd 438B Alexandra Road, Block B Alexandra Technopark, #04-01/04, Singapore 119968. Tel: (65) 6586-5500  
Epson Customer Care Center 100G Pasir Panjang Road, #01-09 Interlocal Centre, Singapore 118523. Epson Helpdesk: 800 120 5564. Please refer to [www.epson.com.sg/contact](http://www.epson.com.sg/contact) for opening hours.

Sales Enquiries  
800 120 5564

epsonsg EpsonSingapore EpsonSoutheastAsia Epson Singapore

For latest specifications, visit [www.epson.com.sg/projectors](http://www.epson.com.sg/projectors) or call +65 800 120 5564.

Epson Singapore Pte Ltd 438B Alexandra Road, Block B Alexandra Technopark, #04-01/04, Singapore 119968. Tel: (65) 6586-5500  
Epson Customer Care Center 100G Pasir Panjang Road, #01-09 Interlocal Centre, Singapore 118523. Epson Helpdesk: 800 120 5564. Please refer to [www.epson.com.sg/contact](http://www.epson.com.sg/contact) for opening hours.

## SPECIFICATIONS EB-W51

MODEL NUMBER		EB-W51
<b>Projection Technology</b>		RGB liquid crystal shutter projection system (3LCD)
<b>Specifications of Main Parts</b>		
LCD	Size	0.59" (C2fine)
	Native Resolution	WXGA (1280 x 800)
	Lightsource	Type 210W UHE Life (Normal / Eco) 6,000 / 12,000 hours
Aspect Ratio	16:10	
Projection Lens		Type Optical Zoom (Manual) / Focus (Manual) F-Number 1.49 – 1.72 Focal Length 16.90 – 20.28 mm Zoom Ratio 1 – 1.2 Throw Ratio 1.30 – 1.56 (Wide to Tele)
<b>Screen Size (Projected Distance)</b>		
Standard		Tele: 33" to 320" [1.10 to 10.89 m] Wide: 33" to 320" [0.91 to 9.07 m]
<b>Brightness<sup>1</sup></b>		
White Light Output (Normal / Extended)		4,000 lm
Colour Light Output		4,000 lm
<b>Contrast Ratio</b>		16,000:1
<b>Geometric Correction</b>		
Vertical / Horizontal Keystone		±30° / ±30° (Auto Vertical Keystone only)
Quick Corner		Yes
<b>Split Screen</b>		Yes
<b>Internal Speakers</b>		Monoaural: 2W x 1
<b>Connectivity</b>		
Analog Input	D-Sub 15Pin	1
	Composite	1 (RCA)
Digital Input	DVI-D	NA
	HDMI	1
	HDBaseT	NA
Output Terminal	D-Sub 15Pin	NA
	HDMI	NA
Audio Input	2RCA (White & Red)	1
Audio Output	Stereo Mini Jack	NA
Others	USB Type A	1 (For Wireless LAN, Firmware Update, Copy OSD Settings)
	USB Type B	1 (For Firmware Update, Copy OSD Settings)
Control I/O	RS-232C	NA
	Remote Control Input	NA
Network	Wired LAN	NA
	Wireless	Optional (ELPAP11)
<b>Wireless Specification</b>		
Supported Speed For Each Mode		IEEE 802.11b (2.4GHz): 11 Mbps <sup>2</sup> / IEEE 802.11g (2.4GHz): 54 Mbps <sup>2</sup> / IEEE 802.11n (2.4GHz): 72.2 Mbps <sup>2</sup> / IEEE 802.11a (5GHz): 54 Mbps <sup>2</sup> / IEEE 802.11n (5GHz): 150 Mbps <sup>2</sup>
Wireless LAN Security		Infrastructure: OPEN, WPA2/WPA3-PSK Access Point: OPEN, WPA2-PSK (AES)
<b>Operating Temperature</b>		
Low Altitude: 5 – 40 °C <41 – 104 °F> High Altitude: 5 – 35 °C <41 – 95 °F> (20% – 80% Humidity, No Condensation)		
<b>Operating Altitude</b>		
0 – 3,048 m <0 – 10,000 ft>		
<b>Direct Power On / Off</b>		
Yes		
<b>Start-Up Period</b>		
Up to 6 seconds, Warm-up Period: 30 seconds		
<b>Cool Down Period</b>		
Instant Off		
<b>Air Filter</b>		
Type	High Efficiency Filter	
Maintenance Cycle (Normal / Eco)	6,000 / 12,000 hours <sup>3</sup>	
<b>Power Supply Voltage</b>		
100 – 240 V AC ±10%, 50/60 Hz		
<b>Power Consumption (220 - 240V)</b>		
Lamp (Normal / Eco)	327W / 225W	
Standby (Network / Energy Saving)	2.0W / 0.3W	
<b>Dimension Excluding Feet (D X W X H)</b>		
234 x 302 x 77 mm		
<b>Weight (Including Standard Lens)</b>		
Approx. 2.5 kg		
<b>Fan Noise (Normal / Quiet)</b>		
37dB / 28dB		

<sup>1</sup> Colour brightness (colour light output) and white brightness (white light output) will vary depending on usage conditions. Colour light output measured in accordance with IDMS 15:4; white light output measured in accordance with ISO 21118.

<sup>2</sup> Maximum speed and range is achievable when used with same enhanced mode technology. Actual data rates, features and performance may vary depending on your computer system, the environment and other factors.

<sup>3</sup> When used in the general office environment (the amount of floating dust: 0.04 - 0.2 mg/m<sup>3</sup>). Based on the Epson's in-house test results.

## EB-W51

### Supplied Accessories

Power Cable (1.8m)  
HDMI Cable (1.8m)  
Remote control with 2AA Battery  
User's Manual CDROM  
Quick Start Guide

### Optional Accessories

Spare Lamp: ELPLP97  
Air Filter: ELPAF32  
Wireless LAN Card + Cover: ELPAP11  
Ceiling Mount: ELPMB23  
Carry Case: ELPKS69



EB-W06

©2021 Epson Singapore Pte Ltd. All Rights Reserved. Reproduction in part or in whole, without the written permission from Epson, is strictly prohibited.

EPSON and EXCEED YOUR VISION are registered trademarks of Seiko Epson Corporation.

All other product names and other company names used herein are for identification purposes only and are the trademarks or registered trademarks of their respective owners.

Epson disclaims any and all rights in those marks. Projected images shown herein are simulations. The actual product design and contents may vary. Specifications are subject to change without notice and may vary between countries. Please check with local Epson offices for more information.

Apple, iPad and iPhone are trademarks of Apple Inc., registered in the U.S. and other countries. App Store is a service mark of Apple Inc.

Android is a trademark of Google Inc.

Dealer's Stamp

Information correct at time of printing.  
Printed February 2021

## EPSON EXCEED YOUR VISION

## SPECIFICATIONS EB-FH52

MODEL NUMBER		EB-FH52
<b>Projection Technology</b>		RGB liquid crystal shutter projection system (3LCD)
<b>Specifications of Main Parts</b>		
LCD	Size	0.61" (C2fine)
	Native Resolution	1080p
	Lightsource	Type 230W UHE Life (Normal / Eco) 5,500 / 12,000 hours
Aspect Ratio	16:9	
Projection Lens		Type Optical Zoom (Manual) / Focus (Manual) F-Number 1.51 – 1.99 Focal Length 18.20 – 29.20 mm Zoom Ratio 1 – 1.6 Throw Ratio 1.32 – 2.14 (Wide to Tele)
<b>Screen Size (Projected Distance)</b>		
Standard		Tele: 30" to 300" [1.42 to 14.41 m] Wide: 30" to 300" [0.87 to 8.88 m]
<b>Brightness<sup>1</sup></b>		
White Light Output (Normal / Extended)		4,000 lm
Colour Light Output		4,000 lm
<b>Contrast Ratio</b>		16,000:1
<b>Geometric Correction</b>		
Vertical / Horizontal Keystone		±30° / ±30° (Auto Vertical Keystone only)
Quick Corner		Yes
<b>Split Screen</b>		Yes
<b>Internal Speakers</b>		Monoaural: 16W x 1
<b>Connectivity</b>		
Analog Input	D-Sub 15Pin	1
	Composite	1 (RCA)
Digital Input	DVI-D	NA
	HDMI	2
	HDBaseT	NA
Output Terminal	D-Sub 15Pin	NA
	HDMI	NA
Audio Input	2RCA (White & Red)	1
Audio Output	Stereo Mini Jack	NA
Others	USB Type A	1 (For Wireless LAN, Firmware Update, Copy OSD Settings)
	USB Type B	1 (For Firmware Update, Copy OSD Settings)
Control I/O	RS-232C	NA
	Remote Control Input	NA
Network	Wired LAN	NA
	Wireless	Built-In
<b>Wireless Specification (Screen Mirroring)</b>		
Supported Speed For Each Mode		IEEE 802.11g (2.4GHz): 54Mbps <sup>2</sup> / IEEE 802.11n (2.4GHz): 130 Mbps <sup>2</sup> / IEEE 802.11a (5GHz): 54 Mbps <sup>2</sup> / IEEE 802.11n (5GHz): 270 Mbps <sup>2</sup> / IEEE 802.11ac (5 GHz): 780 Mbps <sup>2</sup>
<b>Wireless Specification (Built-in Wireless LAN)</b>		
Supported Speed For Each Mode		IEEE 802.11b (2.4GHz): 11Mbps <sup>2</sup> / IEEE 802.11g (2.4GHz): 54 Mbps <sup>2</sup> / IEEE 802.11n (2.4GHz): 72.2 Mbps <sup>2</sup> / IEEE 802.11a (5GHz): 54 Mbps <sup>2</sup> / IEEE 802.11n (5 GHz): 150 Mbps <sup>2</sup>
Wireless LAN Security		Quick Mode: OPEN, WPA2-PSK (AES) Advanced Mode: OPEN, WPA2/WPA3-PSK, WPA2/WPA3-EAP Supported EAP Type: PEAP, PEAP-TLS, EAP-TLS, EAP-Fast
Low Altitude: 5 – 40 °C <41 – 104 °F> High Altitude: 5 – 35 °C <41 – 95 °F> (20% – 80% Humidity, No Condensation)		
<b>Operating Temperature</b>		
0 – 3,048 m <0 – 10,000 ft>		
<b>Operating Altitude</b>		
0 – 3,048 m <0 – 10,000 ft>		
<b>Direct Power On / Off</b>		
Yes		
<b>Start-Up Period</b>		
Up to 6 seconds, Warm-up Period: 30 seconds		
<b>Cool Down Period</b>		
Instant Off		
<b>Air Filter</b>		
Type	High Efficiency Filter	
Maintenance Cycle (Normal / Eco)	10,000 / 20,000 hours <sup>3</sup>	
<b>Power Supply Voltage</b>		
100 – 240 V AC ±10%, 50/60 Hz		
<b>Power Consumption (220 - 240V)</b>		
Lamp (Normal / Eco)	327W / 225W	
Standby (Network / Energy Saving)	2.0W / 0.3W	
<b>Dimension Excluding Feet (D X W X H)</b>		
282 x 309 x 90 mm		
<b>Weight (Including Standard Lens)</b>		
Approx. 3.1 kg		
<b>Fan Noise (Normal / Quiet)</b>		
37dB / 28dB		

<sup>1</sup> Colour brightness (colour light output) and white brightness (white light output) will vary depending on usage conditions. Colour light output measured in accordance with IDMS 15:4; white light output measured in accordance with ISO 21118.

<sup>2</sup> Maximum speed and range is achievable when used with same enhanced mode technology. Actual data rates, features and performance may vary depending on your computer system, the environment and other factors.

<sup>3</sup> When used in the general office environment (the amount of floating dust: 0.04 - 0.2 mg/m<sup>3</sup>). Based on the Epson's in-house test results.

## EB-FH52

### Supplied Accessories

Power Cable (1.8m)  
HDMI Cable (1.8m)  
Remote control with 2AA Battery  
ELPAP11 Wireless Lan (Built-In)  
User's Manual CDROM  
Quick Start Guide

### Optional Accessories

Spare Lamp: ELPLP97  
Air Filter: ELPAF54  
Ceiling Mount: ELPMB23  
Carry Case: ELPKS70



EB-FH52

©2021 Epson Singapore Pte Ltd. All Rights Reserved. Reproduction in part or in whole, without the written permission from Epson, is strictly prohibited.

EPSON and EXCEED YOUR VISION are registered trademarks of Seiko Epson Corporation.

All other product names and other company names used herein are for identification purposes only and are the trademarks or registered trademarks of their respective owners.

Epson disclaims any and all rights in those marks. Projected images shown herein are simulations. The actual product design and contents may vary. Specifications are subject to change without notice and may vary between countries. Please check with local Epson offices for more information.

Apple, iPad and iPhone are trademarks of Apple Inc., registered in the U.S. and other countries. App Store is a service mark of Apple Inc.

Android is a trademark of Google Inc.

Dealer's Stamp

Information correct at time of printing.  
Printed February 2021

Sales Enquiries  
800 120 5564

epsonsg EpsonSingapore EpsonSoutheastAsia Epson Singapore

For latest specifications, visit [www.epson.com.sg/projectors](http://www.epson.com.sg/projectors) or call +65 800 120 5564.

Epson Singapore Pte Ltd 438B Alexandra Road, Block B Alexandra Technopark, #04-01/04, Singapore 119968. Tel: (65) 6586-5500  
Epson Customer Care Center 100G Pasir Panjang Road, #01-09 Interlocal Centre, Singapore 118523. Epson Helpdesk: 800 120 5564. Please refer to [www.epson.com.sg/contact](http://www.epson.com.sg/contact) for opening hours.

Sales Enquiries  
800 120 5564

epsonsg EpsonSingapore EpsonSoutheastAsia Epson Singapore

For latest specifications, visit [www.epson.com.sg/projectors](http://www.epson.com.sg/projectors) or call +65 800 120 5564.

Epson Singapore Pte Ltd 438B Alexandra Road, Block B Alexandra Technopark, #04-01/04, Singapore 119968. Tel: (65) 6586-5500  
Epson Customer Care Center 100G Pasir Panjang Road, #01-09 Interlocal Centre, Singapore 118523. Epson Helpdesk: 800 120 5564. Please refer to [www.epson.com.sg/contact](http://www.epson.com.sg/contact) for opening hours.