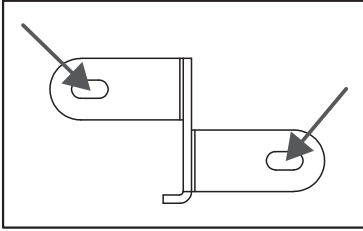
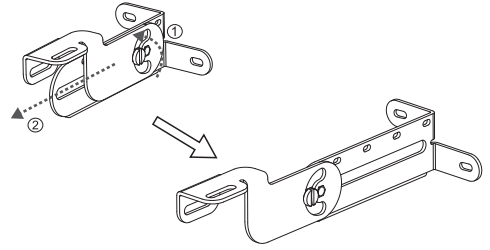


CAMERA MOUNT INSTALLATION GUIDE

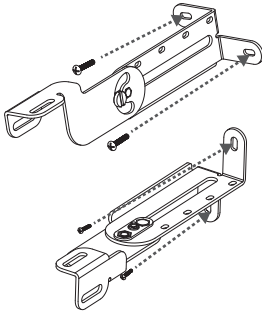


1. Paste the drilling paper on the wall or ceiling. Drill the holes for installing mount bracket.

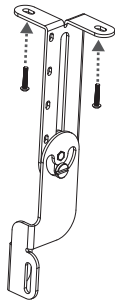


2. Use the tool (e.g. coin) to loosen the screw on stand and move the stand to the desired position and secure the screw.

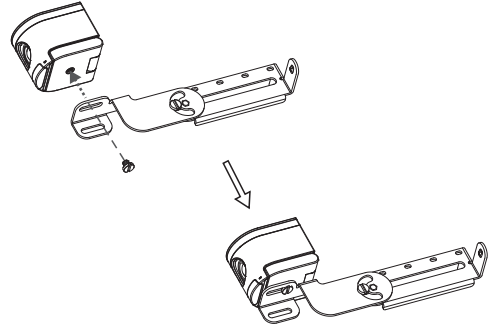
Wall Mount



Ceiling Mount

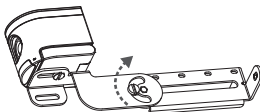


3. Secure the mount bracket with two M4 or M5 screws on the wall or ceiling. The mount bracket can be installed in various positions as figures shown.

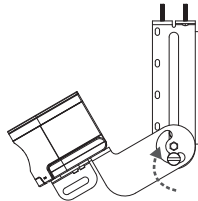


4. Install the camera on the mount bracket with the screw.

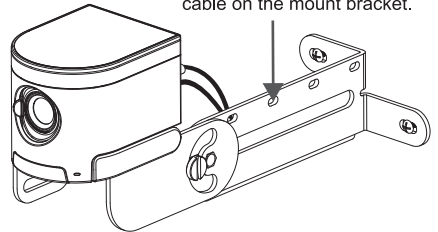
Wall Mount



Ceiling Mount



User can use cable tie to fix the cable on the mount bracket.



5. Move the stand to the desired position and secure the screw.

6. Finally, connect the necessary cables to the camera.