



\* All images are for illustrative purposes only.

**OUTDOOR** LG LED SIGNAGE

# GSCA Versatile Series



Fast Installation



Easy Maintenance



Two Cabinet Options



90° Corner Design Available

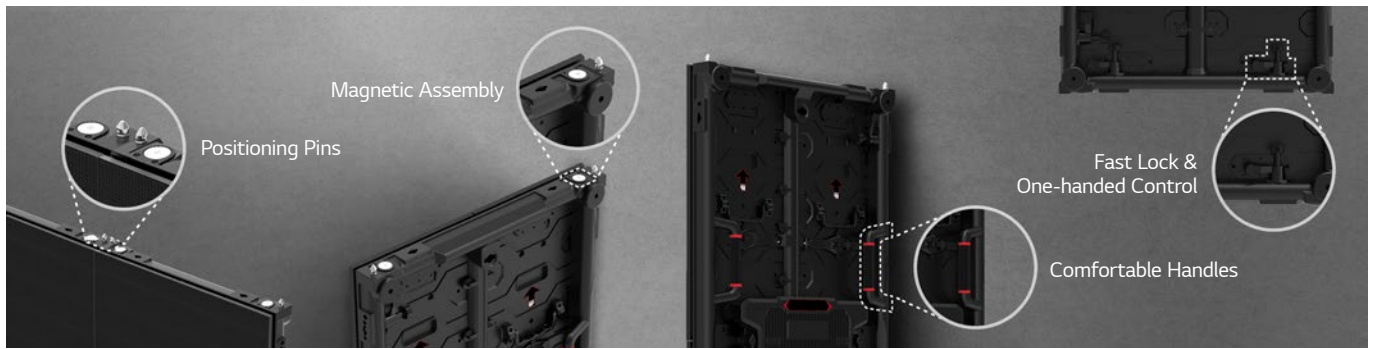


Front or Rear Serviceability



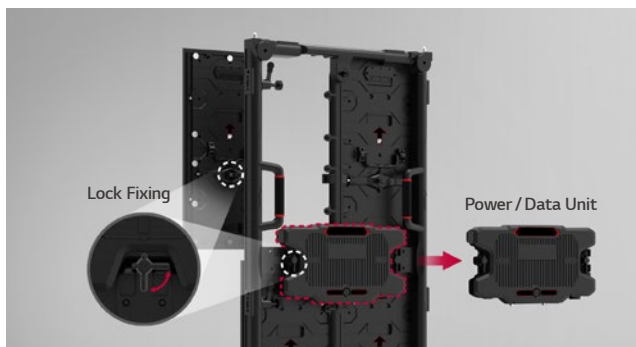
IP Rated Weatherproof Design





## Fast Installation

Various factors including magnets on the top and bottom, positioning pins, handles and fast locks help installers easily set up and dismantle the LED screens without additional tools.



## Easy Maintenance

The GSCA series applied a simple Lock Fixing method which requires no additional tools, making it easier to replace LED modules or power/data units. It saves cost and time for maintenance.



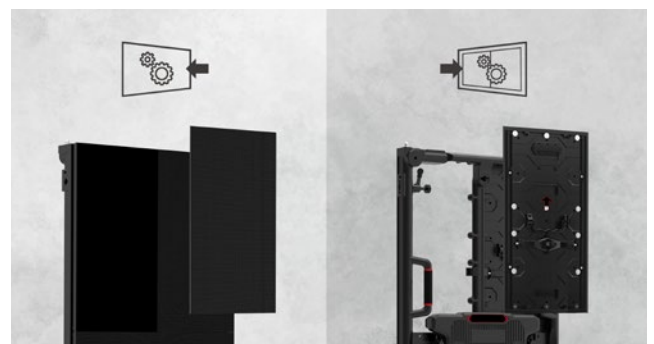
## Two Cabinet Options

The GSCA series offers two sizes of cabinets enabling a screen size configuration that fits perfectly with customer's demands.



## IP Rated Weatherproof & 90° Corner Design

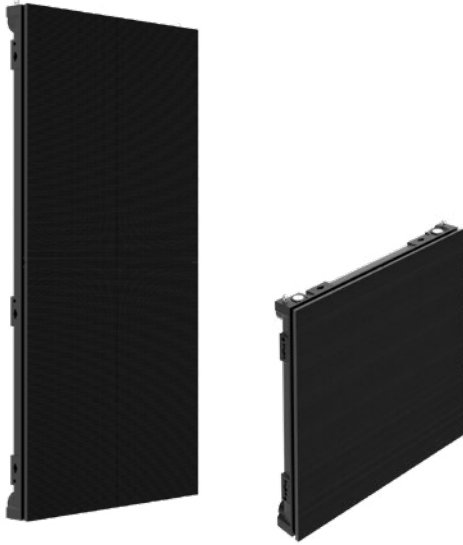
The cabinet is IP65 certified, allowing stable operation unaffected by weather and harsh outdoor environments. Also, if you add a 90° corner option, the GSCA series can deliver flawless content even when installed on the corners.



## Front or Rear Serviceability

The product offers either front access or rear access, allowing customers to choose installation options according to their environment and minimizes limitations in installation and maintenance.

## PRODUCT INFORMATION

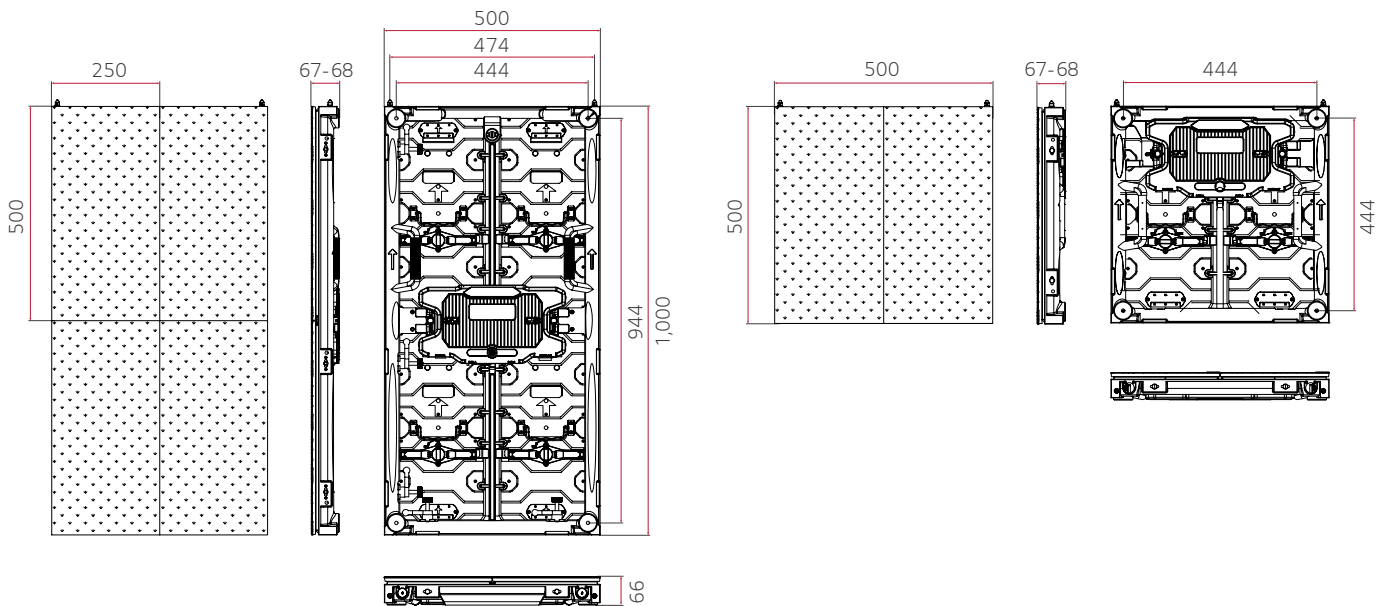


### GSCA Series

Pixel Pitch	3.91 / 4.63 mm
Brightness	5,000 nit
Refresh Rate	3,840 Hz
Serviceability	Front or Rear (One Option Only)
IP Rating	IP65

## DIMENSION

(unit: mm)



Download  
LG C-Display+  
Mobile App  
Google Play Store

- [www.lg.com/global/business/information-display](http://www.lg.com/global/business/information-display)
- [www.youtube.com/c/LGCommercialDisplay](https://www.youtube.com/c/LGCommercialDisplay)
- [www.facebook.com/LGInformationDisplay](https://www.facebook.com/LGInformationDisplay)
- [www.linkedin.com/company/lginformationdisplay](https://www.linkedin.com/company/lginformationdisplay)
- [twitter.com/LG\\_ID\\_HQ](https://twitter.com/LG_ID_HQ)

LG may make changes to specifications and product descriptions without notice. Copyright © 2020 LG Electronics Inc. All rights reserved. "LG Life's Good" is a registered trademark of LG Corp. The names of products and brands mentioned here may be the trademarks of their respective owners.