

Jabra Stealth UC



Đơn vị bán tại nghe Jabra giá rẻ:
CÔNG TY TNHH CUNG ỨNG NGỌC THIÊN
Điện thoại: 028 777 98 999
Email: info@vnsup.com



User manual

GN Making Life Sound Better

Đơn vị bán tại nghe Jabra giá rẻ:
CÔNG TY TNHH CUNG ỨNG NGỌC THIÊN
Điện thoại: 028 777 98 999
Email: info@vnsup.com

© 2015 GN Audio A/S (GN Netcom A/S). All rights reserved. Jabra® is a registered trademark of GN Audio A/S. All other trademarks included herein are the property of their respective owners. The Bluetooth® word mark and logos are owned by the Bluetooth SIG, Inc. and any use of such marks by GN Audio A/S is under license.

MADE IN CHINA
MODEL:OTE18



 **Bluetooth®**

Declaration of Conformity can be found on
www.jabra.com/CP/US/declarations-of-conformity

1. WELCOME	4
2. HEADSET OVERVIEW	5
3. HOW TO WEAR.....	6
3.1 CHANGE EARGELS	
3.2 ATTACHING THE EARHOOK	
4. HOW TO CHARGE THE BATTERY	9
4.1 CHARGE USING PC	
4.2 CHARGE USING CAR CHARGER	
5. HOW TO CONNECT	11
5.1 CONNECT TO PC (USING THE JABRA LINK 370 BLUE-TOOTH ADAPTER)	
5.2 CONNECT TO MOBILE DEVICE	
5.3 CONNECT TO MOBILE DEVICE (NFC)	
6. HOW TO USE	14
6.1 EVERYDAY CALLS	
6.2 AUTOMATIC VOLUME CONTROLS	
6.3 MULTIPLE CALL HANDLING	
7. SOFTWARE	17
7.1 JABRA CONNECT	
8. SUPPORT	18
8.1 FAQ	
8.2 HOW TO CARE FOR YOUR HEADSET	
9. TECHNICAL SPECIFICATIONS	19

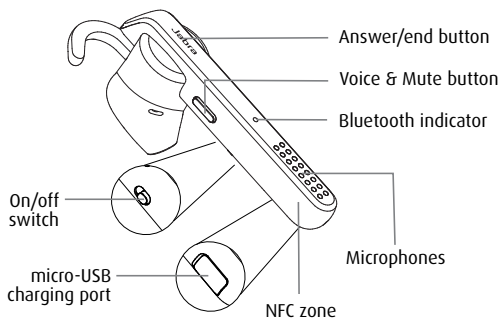
1. WELCOME

Thank you for using the Jabra Stealth UC. We hope you will enjoy it!

JABRA STEALTH UC FEATURES

- Voice guidance
- Smart phone voice controls
- Battery and pairing status display
- HD voice
- Up to 6 hours talk time
- Power Nap for extended battery performance
- Wireless freedom - Up to 30m/100ft range
- Intelligent volume controls that automatically adjust to your surroundings

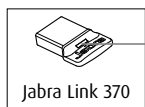
2. HEADSET OVERVIEW



Dual USB
car charger



USB
charger



Jabra Link 370

Bluetooth
indicator



Large
Earhook



Small
EarHook



EarGel



Looped
EarGel



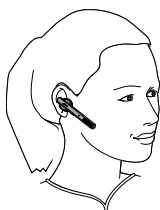
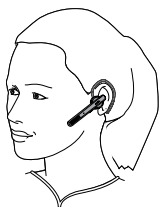
Right
looped
EarGel



Left looped
EarGel

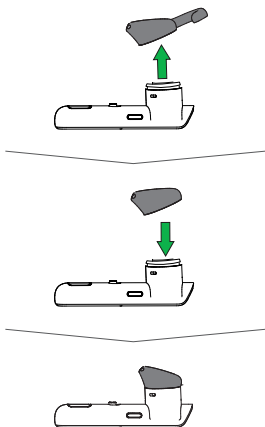
3. HOW TO WEAR

The headset can be worn on the left or right ear. Additional EarHooks and EarGels are available in the pack.



3.1 CHANGE EARGELS

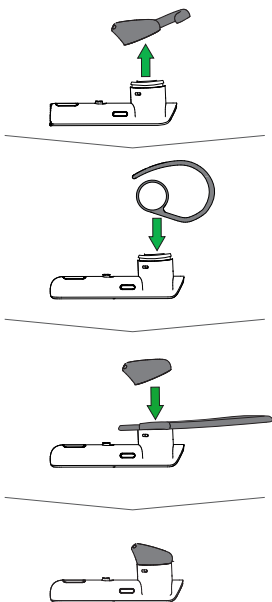
Choose between 3 different ergo-designed EarGels for optimal fit and comfort (standard, left looped, and right looped).



3.2 ATTACHING THE EARHOOK

The EarHook can be attached to the headset for a more secure fit.

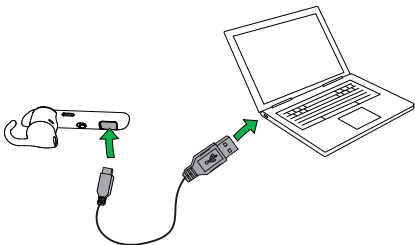
1. Remove the EarGel from the headset.
2. Attach the EarHook.
3. Place the EarGel back on the headset.



4. HOW TO CHARGE THE BATTERY

4.1 CHARGE USING PC

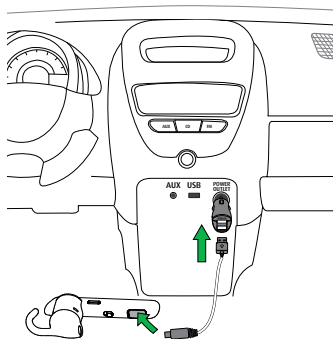
1. Pull back the charging cover on the headset to expose the micro-USB charging port.
2. Connect the headset to a USB port on your PC using the supplied USB cable.



It takes approx. 2 hours to fully charge the headset.

4.2 CHARGE USING CAR CHARGER

1. Pull back the charging cover on the headset to expose the micro-USB charging port.
2. Connect the headset to car charger using the supplied USB cable.
3. Plug the car charger into your car's power supply.

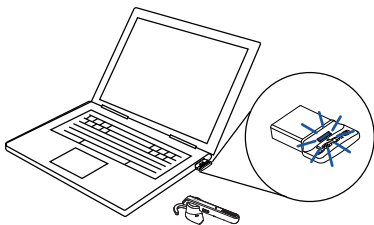


5. HOW TO CONNECT

5.1 CONNECT TO PC (USING THE JABRA LINK 370 BLUETOOTH ADAPTER)

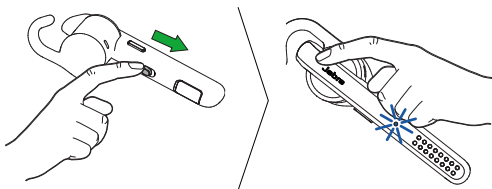
1. Turn the headset on.
2. Plug the supplied Jabra Link 370 Bluetooth adapter into any USB port on your PC. The Bluetooth indicator on the Jabra Link 370 will light solid blue when connected.

NOTE: The Jabra Link 370 is plug-and-play and is already connected to the headset.



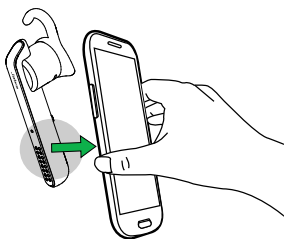
5.2 CONNECT TO MOBILE DEVICE

1. Turn the headset on.
2. Press and hold (3 secs) the **Answer/end** button on the headset until the Bluetooth indicator flashes blue, and connection mode is announced in the headset.
3. Follow the voice-guided instructions to connect to your Bluetooth device.

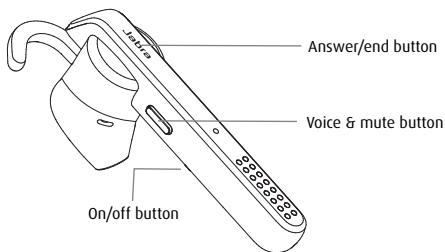


5.3 CONNECT TO MOBILE DEVICE (NFC)

1. Ensure that NFC is enabled on your mobile device.
2. Slowly slide the NFC zone of the headset against the NFC zone of the mobile device until a connection is confirmed.



6. HOW TO USE



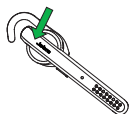
6.1 EVERYDAY CALLS

CALLS



On/Off

Slide the **ON/OFF** switch



Answer/end
call

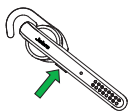
Tap the **Answer/end**
button, or say 'Answer'

Reject call

Double-tap the **Answer/
end** button, or say 'Ignore'

Redial last
number

Double-tap the **Answer/
end** button when not on
a call



Activate voice controls (phone dependent)

Tap the **Voice & mute** button for voice dialing (e.g. Siri/Google Now). Press and hold (1 sec) the **Voice & mute** button for voice commands

Mute/unmute

Tap the **Voice** button when on a call

Adjust speaker volume

Use the volume controls on your connected device


6.2 AUTOMATIC VOLUME CONTROLS

The headset intelligently adjusts the volume of your calls for the optimal sound quality, depending on your surrounding background noise.

To manually adjust the volume, use the volume controls on your softphone (PC) or connected mobile device.

6.3 MULTIPLE CALL HANDLING

The headset can accept and handle multiple calls simultaneously.

	FUNCTION	ACTION
	End current call and answer incoming call	Tap the Answer/end button
	Switch between held call and active call	Press and hold (2 secs) the Answer/end button
	Put current call on hold and answer incoming call	Press and hold (2 secs) the Answer/end button
	Reject incoming call	Double-tap the Answer/end button

7. SOFTWARE

7.1 JABRA CONNECT

Jabra Connect is a smartphone app that enables GPS tracking of the headset, pairing assistance, and headset battery status.

Jabra Connect is available for download in September 2015.

Android download - Google Play
iOS download - App Store

8. SUPPORT

8.1 FAQ

View the comprehensive FAQ on jabra.com/stealthuc

8.2 HOW TO CARE FOR YOUR HEADSET

- Always store the headset with the power off and safely protected.
- Avoid storage at extreme temperatures (above 70°C/158°F or below -10°C/14°F). This can shorten battery life and may affect headset operation.
- Do not expose the headset to rain or other liquids.

9. TECHNICAL SPECIFICATIONS

JABRA STEALTH UC	SPECIFICATION
Weight:	under 7.9g
Dimensions:	L 64.9mm x W 15.3mm x H 24.9mm
Microphones:	Dual microphone technology
Speaker:	11 mm dynamic speaker
Operating range:	30m/98ft (PC connection) 10m/33ft (mobile phone connection)
Bluetooth version:	4.0
Paired devices:	Up to 8, connected to two at the same time (MultiUse™)
Supported Bluetooth profiles:	A2DP(v1.2), Hands Free Profile (v1.6), Headset profile(v1.2), Phone book access profile (v1.0)
Talk time:	Up to 6 hours
Standby time:	Up to 10 days
Operating temperature:	-10°C to 55°C (14°F to 131°F)
Storage temperature:	-20°C to 70°C (-4°F to 158°F)
Pairing passkey or PIN:	0000

JABRA LINK 370 BLUETOOTH ADAPTER	SPECIFICATION
PC connection	USB 2.0
Bluetooth version	4.2
Bluetooth profiles	A2DP (v1.2), Hands free profile (v1.6)
Simultaneous bluetooth connections	1
Bluetooth audio bandwidth	Wideband (HD Voice), A2DP
Visual indicators	Multicolor LED

jabra.com/stealthuc